

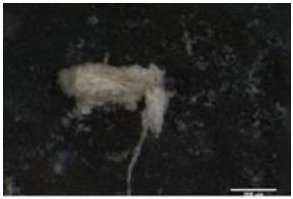
Images of RS8 (*Fraxinus*-scraping) residues

using Leica MZ16 stereomicroscope; all are extended depth of focus

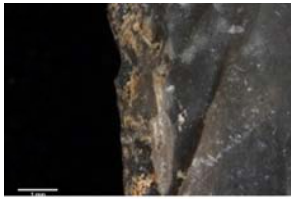
The key to the images is in the first page of this document.

The images published in this pdf are those that were used in the training portion of the experiment reported in Monnier et al. 2012, *J. Arch. Sci.* For questions, please contact Gilliane Monnier at monni003@umn.edu.

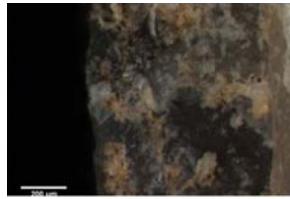
Naming conventions: 'RS' = Residue Study; 'D' = Dorsal side; 'V' = Ventral side; 'a', 'b', etc. = residue label; '25', '50', '115' = magnification used



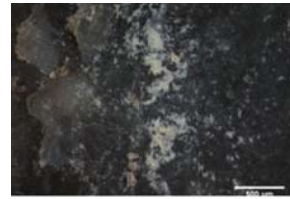
S8D_h_115_composit_scaled.



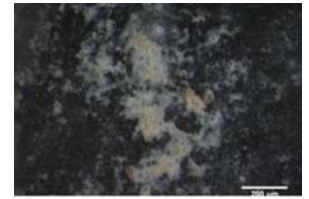
S8D_i_20_composit_scaled.t



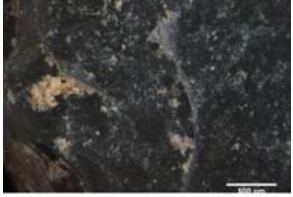
S8D_i_115_composit_scaled.



S8D_j_50_composit_scaled.t



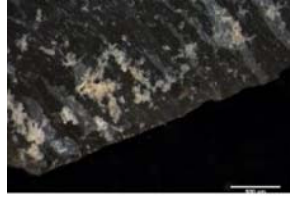
S8D_j_115_composit_scaled.



S8D_k_50_composit_scaled.f



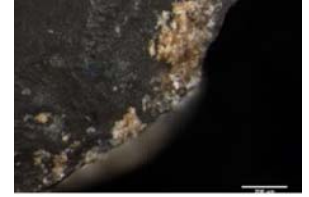
S8D_k_115_composit_scaled.



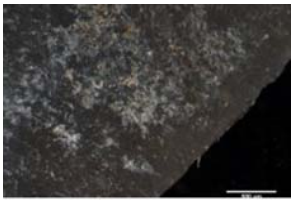
S8V_a_50_composit_scaled.f



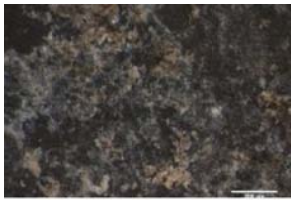
S8V_a_115_composit_scaled.



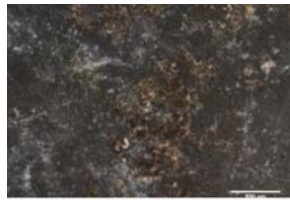
S8V_b_115_composit_scaled.



S8V_c_50_composit_scaled.f



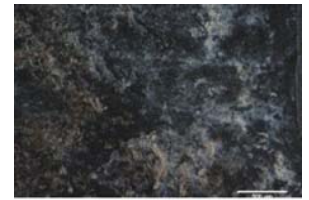
S8V_c_115_composit_scaled.



S8V_d_50_composit_scaled.f



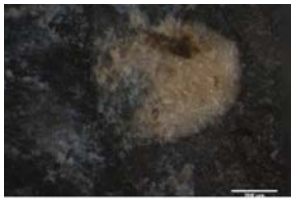
S8V_d_115_composit_scaled.



S8V_e_1_50_composit_scaled



S8V_e_2_50_composit_scaled



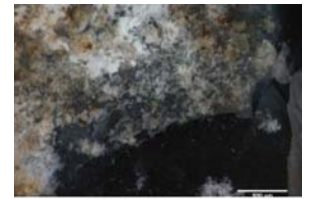
S8V_e_2_115_composit_scaled



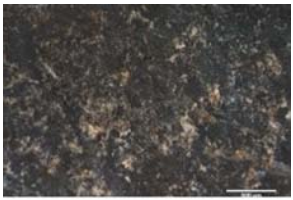
S8V_e1_115_composit_scaled



S8V_f_50_composit_scaled.t



S8V_g_50_composit_scaled.f



S8V_h_50_composit_scaled.f



